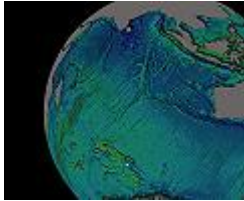


# Duke Office of Information Technology

## Geographic Information Systems Lab



OIT's Student Technology Services group, in conjunction with the Nicholas School of the Environment, provides ArcGIS 9.1 in the OIT Bostock Lower Level lab. Tutorials and lab assistance are available during the Fall and Spring semesters.

### What are Geographic Information Systems?

Geographic Information Systems (GIS) are ways to organize and analyze data from a spatial perspective.

Potential uses for GIS software

- ? conservation and resource management
- ? demographic analysis
- ? city and regional planning
- ? interactive mapping

GIS Data Sources

- ? [ESRI](#)
- ? [GISDataDepot](#)
- ? [Geodata.gov](#)
- ? [USGS](#)

Location

[OIT Bostock Lower Level](#)

[Old Chemistry 01](#)

### Need help?

A student worker is available Mondays, Wednesdays, and Fridays from 3-6pm to assist with GIS-related questions. To contact, please email: [gishelp@nicholas.duke.edu](mailto:gishelp@nicholas.duke.edu).

Duke Office of Information Technology - [www.oit.duke.edu](http://www.oit.duke.edu) - (919) 684-2200 - [help@oit.duke.edu](mailto:help@oit.duke.edu)