

Connecting to DukeNet Using Windows 2000

These instructions are appropriate for students or faculty-in-residence living in campus residence halls. Instructions for connectivity to wired networks elsewhere are available from your local IT administrator.

Before you begin

To connect to Duke's network using these instructions, you must have:

- ? An installed Ethernet adapter with RJ-45 plug (typically pre-installed in most computers)
- ? An Ethernet cable connected from your computer to an Ethernet port
- ? Windows 2000

Checking for TCP/IP

1. Select Start > Settings > Network and Dial-up Connections.
2. In the Network and Dial-up Connections window, double-click Local Area Connection.
3. In the Local Area Connection Status window, click Properties.
4. In the Local Area Connection Properties window, under Components checked are used by this connection, do one of the following:
 - ? If Internet Protocol (TCP/IP) is listed, skip down to Configuring TCP/IP properties below.
 - ? If Internet Protocol (TCP/IP) is not listed, follow the instructions below for Adding the TCP/IP protocol.

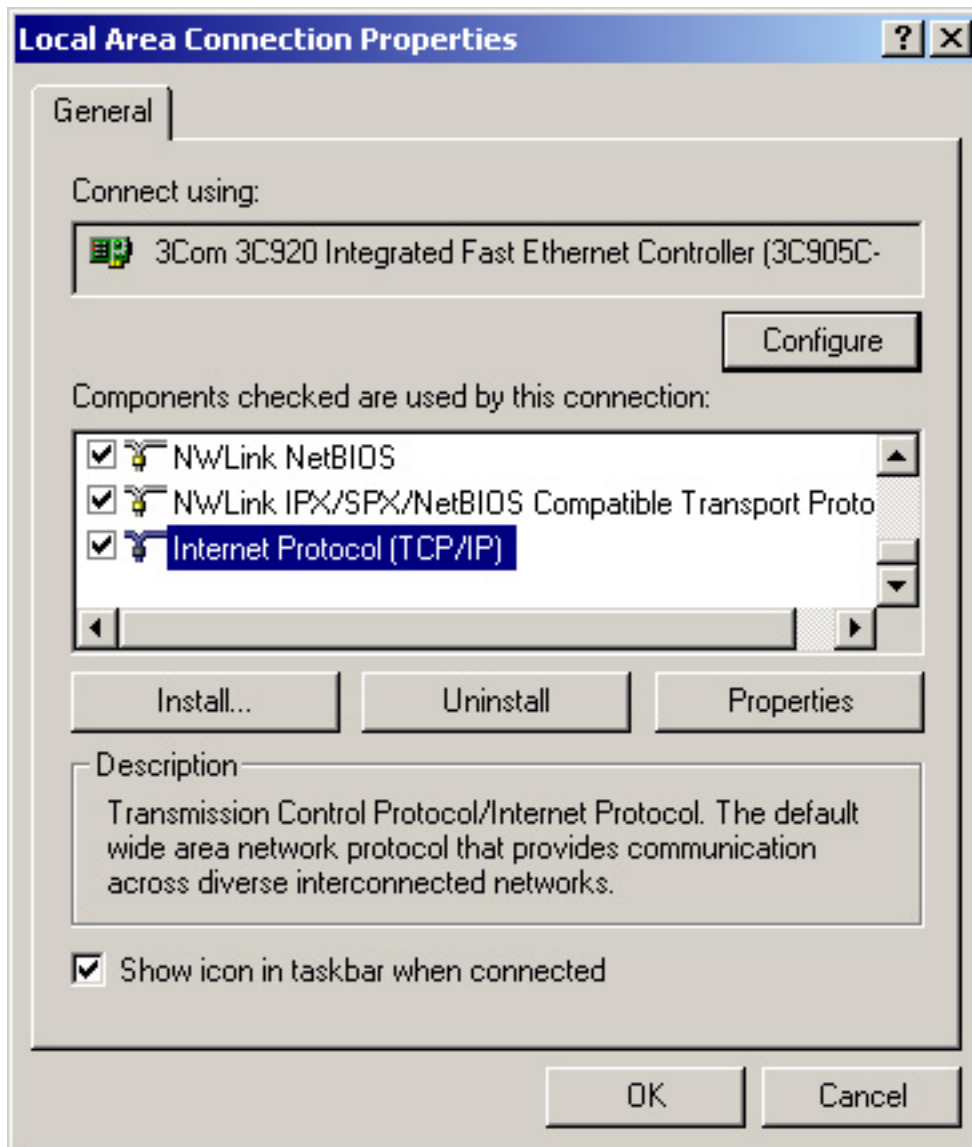
Adding the TCP/IP protocol

1. In the Local Area Connection Properties window, click Install.
2. In the Select Network Component Type window, select Protocol and click Add.
3. In the Select Network Protocol window, click to select Internet Protocol (TCP/IP), then click OK.
4. In the Select Network Component Type window, click Cancel.
5. In the Local Area Connection Properties window, click OK.

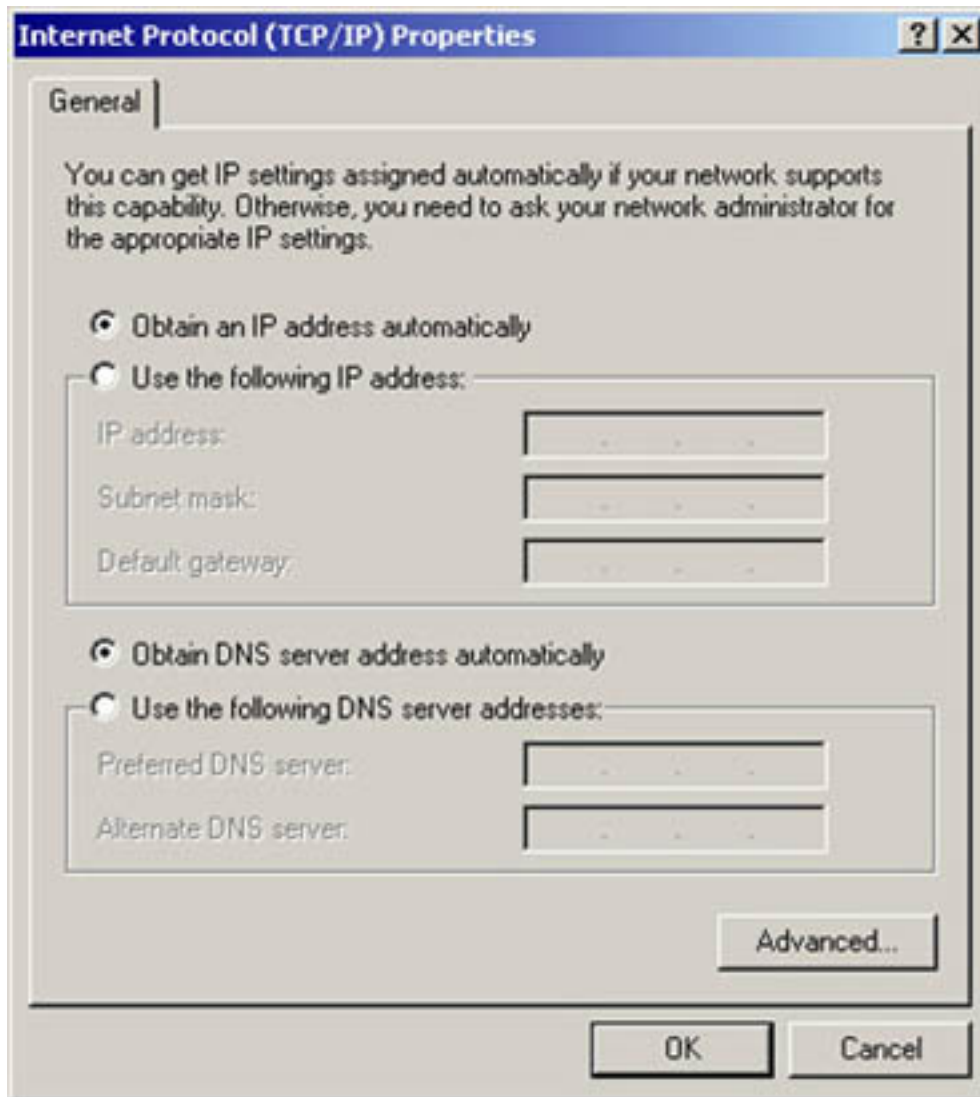
Configuring TCP/IP properties

1. Select Start > Settings > Network and Dial-up Connections. 2. In the Network and Dial-up Connections window, double-click Local Area

3. In the Local Area Connection Status window, click Properties.
4. In the Local Area Connection Properties window, click to select Internet Protocol (TCP/IP), then click Properties.



5. In the Internet Protocol (TCP/IP) Properties window, click to select Obtain an IP address automatically and Obtain DNS server address automatically.



6. Click Advanced.
7. In the Advanced TCP/IP Settings window, click the DNS tab.
8. Click to clear the Register this connection's address in DNS check box.
9. Click OK.
10. In the Internet Protocol (TCP/IP) Properties window, click OK.
11. In the Local Area Connection Properties window, click OK.
12. Restart your computer.

Register for network access

The registration process (referred to as NetReg) will begin automatically the first time you connect to Duke's network and open a Web browser. An online registration form will display, stating Duke's policy on computing security and privacy. To complete your registration:

1. Read the policy.
2. Click Enter.
3. Type your NetID and password.
4. Click Simple Registration.
5. Restart your computer.

You won't need to register again until the next semester.

Get help

If you need assistance, call the OIT Help Desk at (919) 684-2200 or [submit an online request](#).

Duke Office of Information Technology - www.oit.duke.edu - (919) 684-2200 - help@oit.duke.edu