

Duke Office of Information Technology

Connecting to DukeNet Using Windows XP

These instructions are appropriate for students or faculty-in-residence living in campus residence halls. Instructions for connectivity to wired networks elsewhere are available from your local IT administrator.

NOTE: These instructions are based on the default theme and menus of Windows XP.

Before you begin

To connect to Duke's network using these instructions, you must have:

- ? An installed Ethernet adapter with RJ-45 plug (typically pre-installed in most computers)
- ? An Ethernet cable connected from your computer to an Ethernet port
- ? Windows XP

Checking for TCP/IP

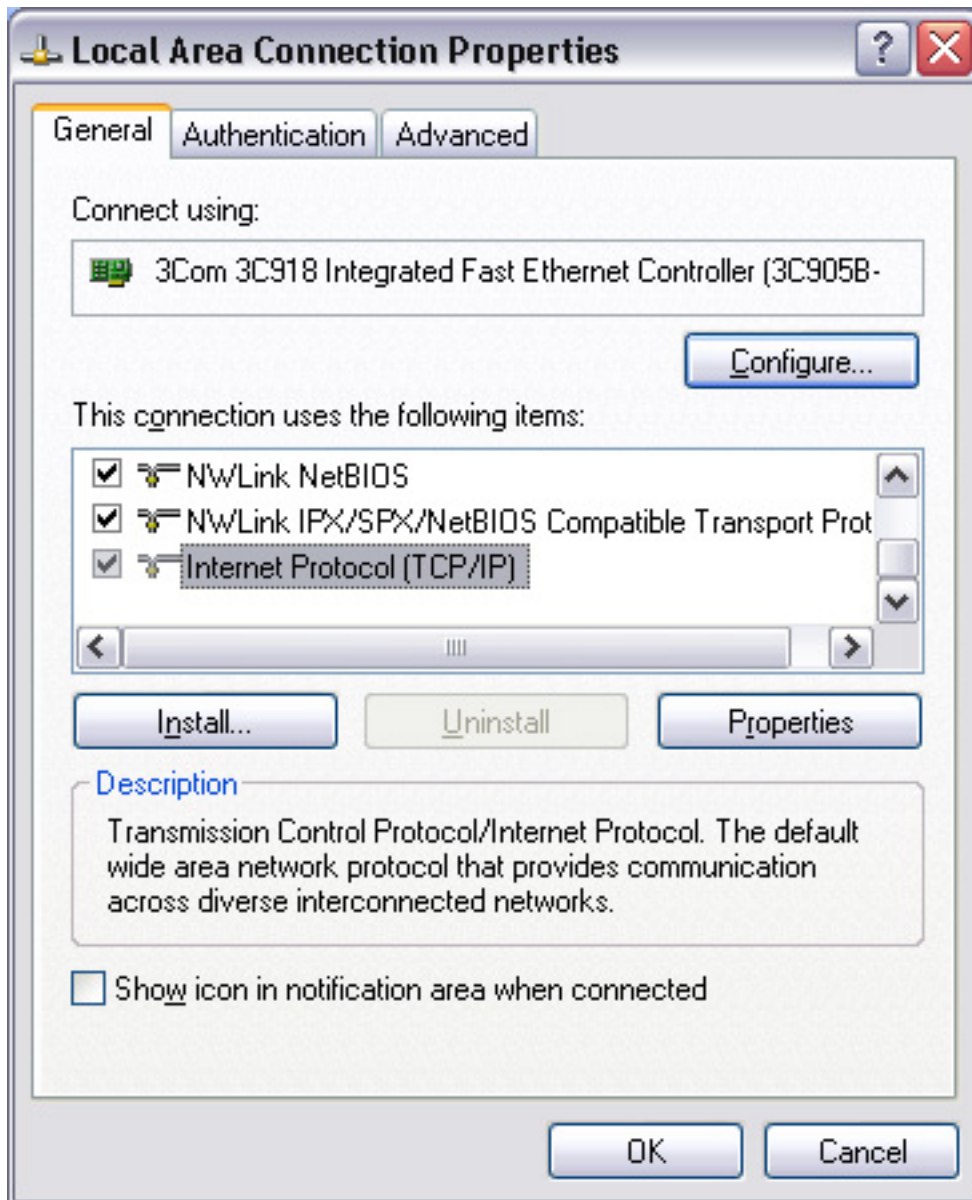
1. Select Start > Control Panel.
2. In the Control Panel, select Network and Internet Connections and click Network Connections.
3. Right-click on Local Area Connection and select Properties.
4. In the Local Area Connection Properties window, under This connection uses the following items, do one of the following:
 - ? If Internet Protocol (TCP/IP) is listed, skip down to Configuring the TCP/IP Protocol below.
 - ? If Internet Protocol (TCP/IP) is not listed, follow the directions for Adding the TCP/IP protocol.

Adding the TCP/IP protocol

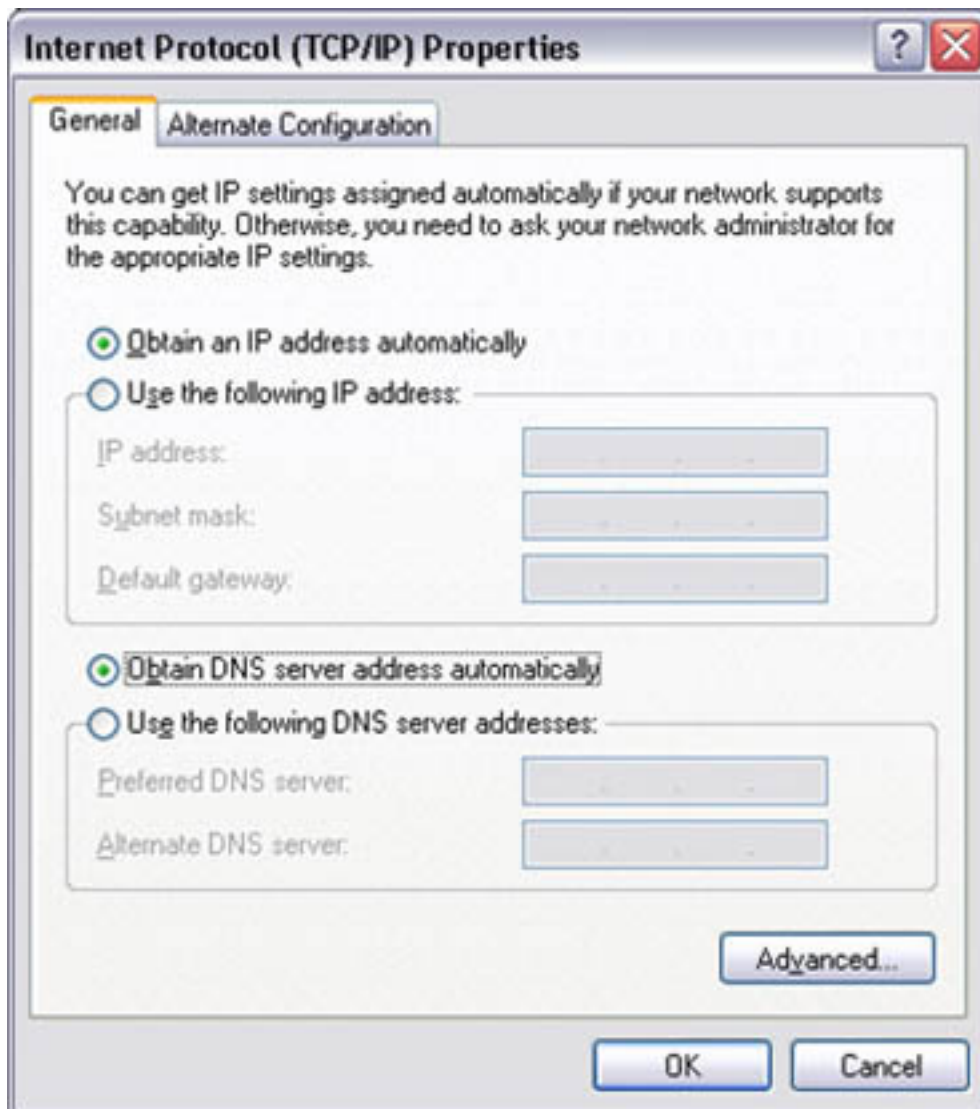
1. In the Local Area Connection Properties window, click Install.
2. In the Select Network Component Type window, click to select Protocol, then click Add.
3. In the Select Network Protocol window, click to select Internet Protocol (TCP/IP), then click OK.

Configuring the TCP/IP Protocol

1. Select Start > Control Panel. 2. In the Control Panel, select Network and Internet Connections and click Network Connections. 3. Right-click on Local Area Connection and select Properties.



4. In the Internet Protocol (TCP/IP) Properties window, select Obtain an IP address automatically and Obtain DNS server address automatically.



5. Click Advanced.
6. In the Advanced TCP/IP Settings window, click the DNS tab.
7. Click to clear the Register this connection's address in DNS check box.
8. Click OK.
9. In the Internet Protocol (TCP/IP) Properties window, click OK.
10. In the Local Area Connection Properties window, click OK.
11. In the Local Area Connection window, click OK.
12. In the Local Area Connection Properties window, under This connection uses the following items, click to select Internet Protocol (TCP/IP), then click Properties.

Register for network access

The registration process (referred to as NetReg) will begin automatically the first time you connect to Duke's network and open a Web browser. An online registration form will display, stating Duke's policy on computing security and privacy. To complete your registration:

1. Read the policy.
2. Click Enter.
3. Type your NetID and password.
4. Click Simple Registration.
5. Restart your computer.

You won't need to register again until the following semester.

Get help

If you need assistance, call the OIT Service Desk at 684-2200 or [submit an online request](#).

Duke Office of Information Technology - www.oit.duke.edu - (919) 684-2200 - help@oit.duke.edu