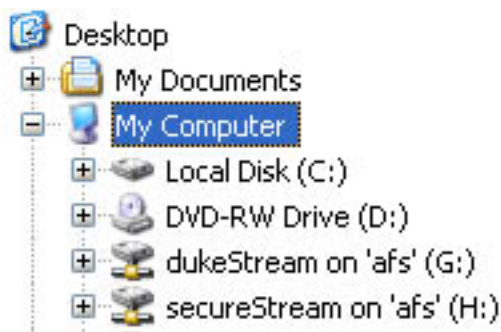


## Uploading Files to Your Account

When you request a DukeStream account, OIT creates a folder for you in the media section of Duke's shared file system (AFS). You can access the folder two main ways to upload and manage your streaming files:

- ? An AFS client, which allows you to map your media folder to your computer's local file system. Your media folder looks like a regular volume on your computer. In the example below "dukeStream" and "secureStream" are media volumes that have been mounted using the Open AFS client for PC:



- ? A secure FTP utility. We recommend [SSH](#) (for PC users) and [Fugu](#) (for Mac users).

NOTE: Security policies at Duke do not allow unsecured FTP access to folders in AFS, including all media folders. You will not be able to connect to your streaming directory via FTP programs such as Fetch or WS\_FTP.

## Tutorials

- ? [Uploading files to your account via the OpenAFS client for PC](#)
- ? [Uploading files to your account via SSH](#)
- ? [Uploading files to your account via Fugu for Mac](#)

Duke Office of Information Technology - [www.oit.duke.edu](http://www.oit.duke.edu) - (919) 684-2200 - [help@oit.duke.edu](mailto:help@oit.duke.edu)